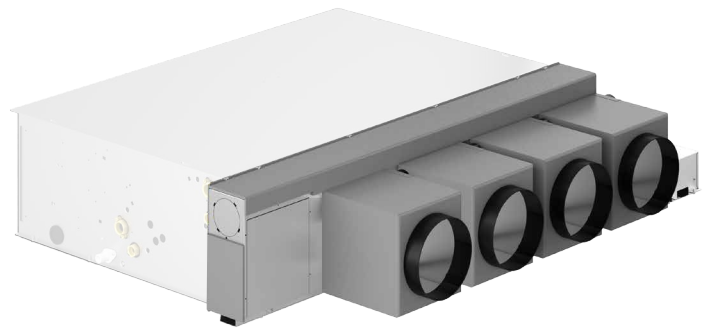


MZC

Plenum with motor-driven dampers



- Multi-zone plenum for controlling air capacity
- Available for channels on/off and inverter fan coils



DESCRIPTION

The plenum with motor-driven dampers is designed for residential and tertiary applications. It combines optimal ambient comfort with assured energy savings.

Modern plant increasingly require overall air conditioning using channelled systems. Thanks to the electronic control of the dampers, the MZC accessory regulates the room's comfort by adjusting the air flow to meet the actual requirements.

MZC is designed for use in combination with all fan coils with asynchronous or brushless motors and is pre-set to distribute exchange air.

FEATURES

Structure

- Galvanized sheet metal structure, insulated with self-extinguishing material.
- From 2 to 6 delivery outlets, depending on the model. Each outlet is fitted with a motorised damper, with the possibility - if required by the system - to add an MZCSM accessory outlet (possibility not available for all models - see the accessory compatibility table)
- Fresh air injection flange, supplied as standard, for connecting the MZC plenum to a heat recovery unit.
- Pre-setting for the installation of an additional air probe (accessory MZCSA) to control modulating or pressure-independent valves.
- Possibility to install the plenum even on the fan coil intake, using a flange (accessory MZCA)
- Reversible electrical box (right/left)
- Water probe supplied as standard, for the fan coil.

Regulation

- MZC is equipped with a zone thermostat VMHI to define the required temperature setting.
- The status of the dampers (open/closed) is adjusted on reaching the temperature set in each room.
- Management of up to 6 motorized dampers.
- Flow control for each damper (the maximum and minimum damper opening can be set for each outlet).
- Possibility to associate the control of several dampers with the request from the same zone thermostat (VMHI or WT10).

- For installations in which the dampers and room thermostats are uniquely associated, the dampers can be modulated in relation to the room thermostat requirements.
- "Suction plenum" function enabling
- MZC can control the valves that may be installed on the fan coil associated with it (On/Off, modulating or pressure-independent types), for 2- or 4-pipe systems
- Possibility to set the control unit parameters via the supervision serial port.

ACCESSORIES

Control panels

WR10: Two-channel wireless receiver for WT10.

WT10: Wireless thermostat.

n°1 as standard



VMF Components

VMF-VOC: Air quality detection accessory.

VMHI: The VMHI panel can be used as a user interface for VMF-E19/E19I thermostats, GLFxN/M or GLLxN grids, or as an interface for the MZC system. What determines the function to be performed by the user interface is determined by its correct parametrisation and by following the electrical connections between interface and thermostat or interface and plenum.

Installation accessories

MZCACV: Electrical system with relay interface board. Mandatory accessory on units where motor absorption exceeds 0.7 A. The relay interface board is supplied with a 2A fuse to protect the fan coil. If the fan coil absorbs more than 2A and up to 4A, the fuse inside must be replaced with a 4A fuse supplied.

MZCAC: Mandatory electrical system for connecting the MZC plenum with a fan coil fitted with an asynchronous motor.

MZCBC: Mandatory electrical system for connecting the MZC plenum with a fan coil fitted with a brushless motor.

MZCSM: Single module with motorized damper.

MZCA: Adapter flange for installing the Plenum even under fan coil suction.

MZCSA: Air probe for controlling modulating or pressure independent valves.

ZCT: It is an electrical device equipped with Bluetooth and WiFi technology, with which it is possible to perform the functions of air probe and thermostat with dry contact. Communicate with the AerChront App (available for Android and iOS) for home control by creating customised rooms with name and cover image. It is available in both white (ZCT_W) and black (ZCT_B) colors. For more information on the use of the application and available functions, please refer to the respective documentation on the site.

ACCESSORIES COMPATIBILITY

Control panels and dedicated accessories

Accessory	MZC220	MZC320	MZC530	MZC830	MZC5040	MZC7050
WR10
WT10

VMF system

Accessory	MZC220	MZC320	MZC530	MZC830	MZC5040	MZC7050
VMF-VOC
VMHI

Installation accessories

Relay interface board

Accessory	MZC7050
MZCACV	.

Accessory	MZC220	MZC320	MZC530	MZC830	MZC5040	MZC7050
MZCAC

Compulsory electrical plant

Accessory	MZC220	MZC320	MZC530	MZC830	MZC5040	MZC7050
MZCBC

Single module with damper

Accessory	MZC320	MZC530	MZC830	MZC5040	MZC7050
MZCSM

Adaptation flange

Accessory	MZC220	MZC320	MZC530	MZC830
MZCA2	.			
MZCA3		.		
MZCA5			.	
MZCA8				.

Air temperature probe

Accessory	MZC220	MZC320	MZC530	MZC830	MZC5040	MZC7050
MZCSA

Thermostat

Accessory	MZC220	MZC320	MZC530	MZC830	MZC5040	MZC7050
ZCT

COMPATIBILITY OF MZC PLENUMS WITH AERMEC FAN COILS

Plenum with motorised dampers - FCZ - PO

Model	Ver	100	101	102	150	200	201	202	250	300	301	302	350	400	401	402	450	500	501	502	550
MZC220	PO,POR																
MZC320	PO,POR																
MZC530	PO,POR												

Model	Ver	600	601	602	650	700	701	702	750	800	801	802	850	900	901	950	1000	1001
MZC830	PO,POR

Plenum with motorised dampers - VED 030-340

Plenum with motorised dampers - VED 430- 741

Accessory	VED430	VED440	VED530	VED540	VED630	VED640	VED730	VED740
MZC5040				
MZC7050				

Accessory	VED432	VED441	VED532	VED541	VED632	VED641	VED732	VED741
MZC5040				
MZC7050				

Plenum with motorised dampers - VED 030I-340I

Plenum with motorised dampers - VED 530I-741I

Accessory	VED530I	VED540I	VED730I	VED740I
MZC5040	.	.		
MZC7050			.	.

Accessory	VED532I	VED541I	VED732I	VED741I
MZC5040	.	.		
MZC7050			.	.

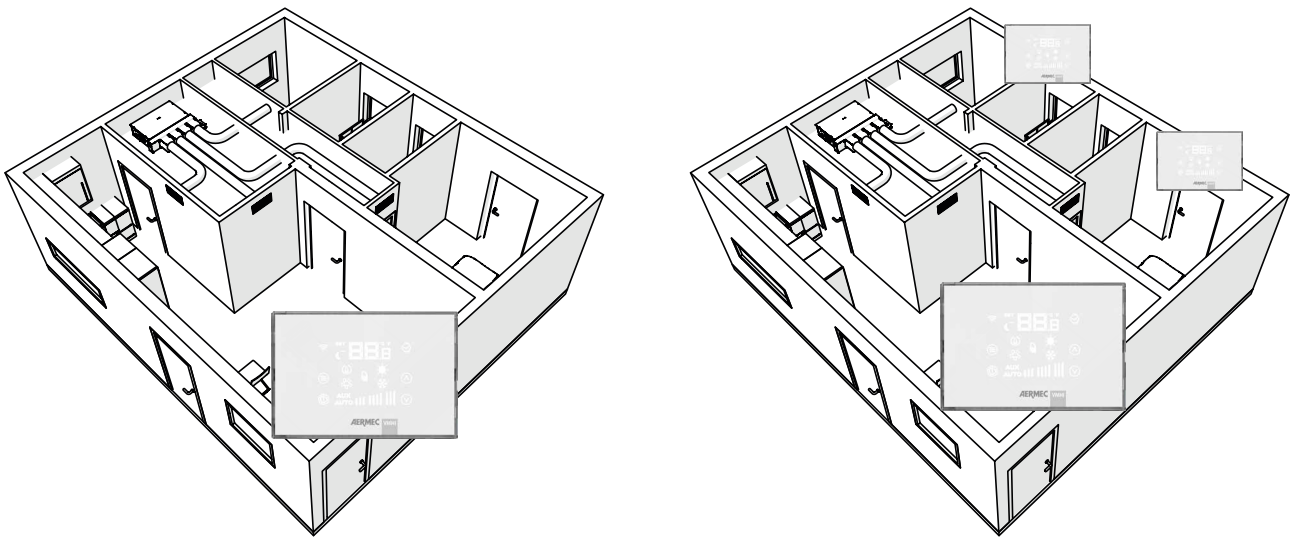
Plenum with motor-driven dampers - VES 030-340

Accessory	VES030	VES040	VES130	VES140	VES230	VES240	VES330	VES340
MZC220	.	.						
MZC320			.	.				
MZC530					.	.		
MZC830							.	.

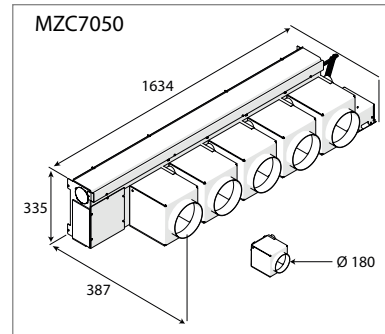
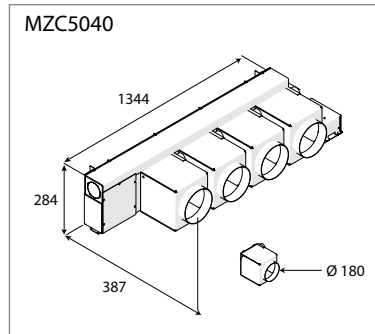
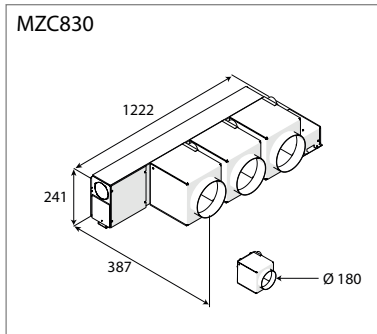
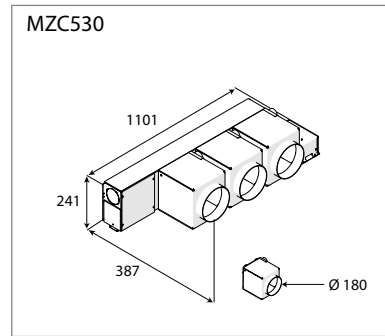
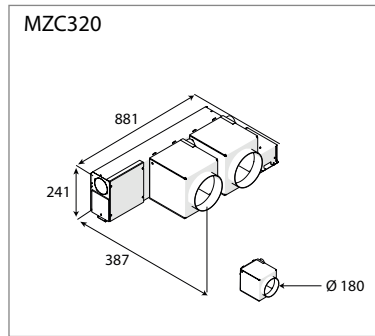
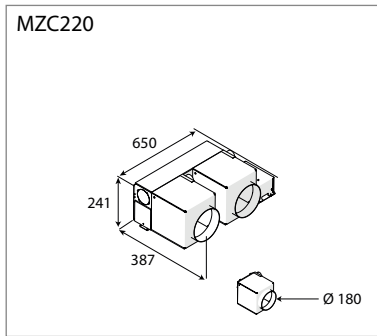
Plenum with motor-driven dampers - VES 030I-340I

Accessory	VES030I	VES040I	VES130I	VES140I	VES230I	VES240I	VES330I	VES340I
MZC220	.	.						
MZC320			.	.				
MZC530					.	.		
MZC830							.	.

SYSTEM SOLUTIONS



DIMENSIONS



Aermec reserves the right to make any modifications deemed necessary.
All data is subject to change without notice. Aermec does not assume
responsibility or liability for errors or omissions.

Aermec S.p.A.
Via Roma, 996 - 37040 Bevilacqua (VR) - Italia
Tel. 0442633111 - Telefax 044293577
www.aermec.com